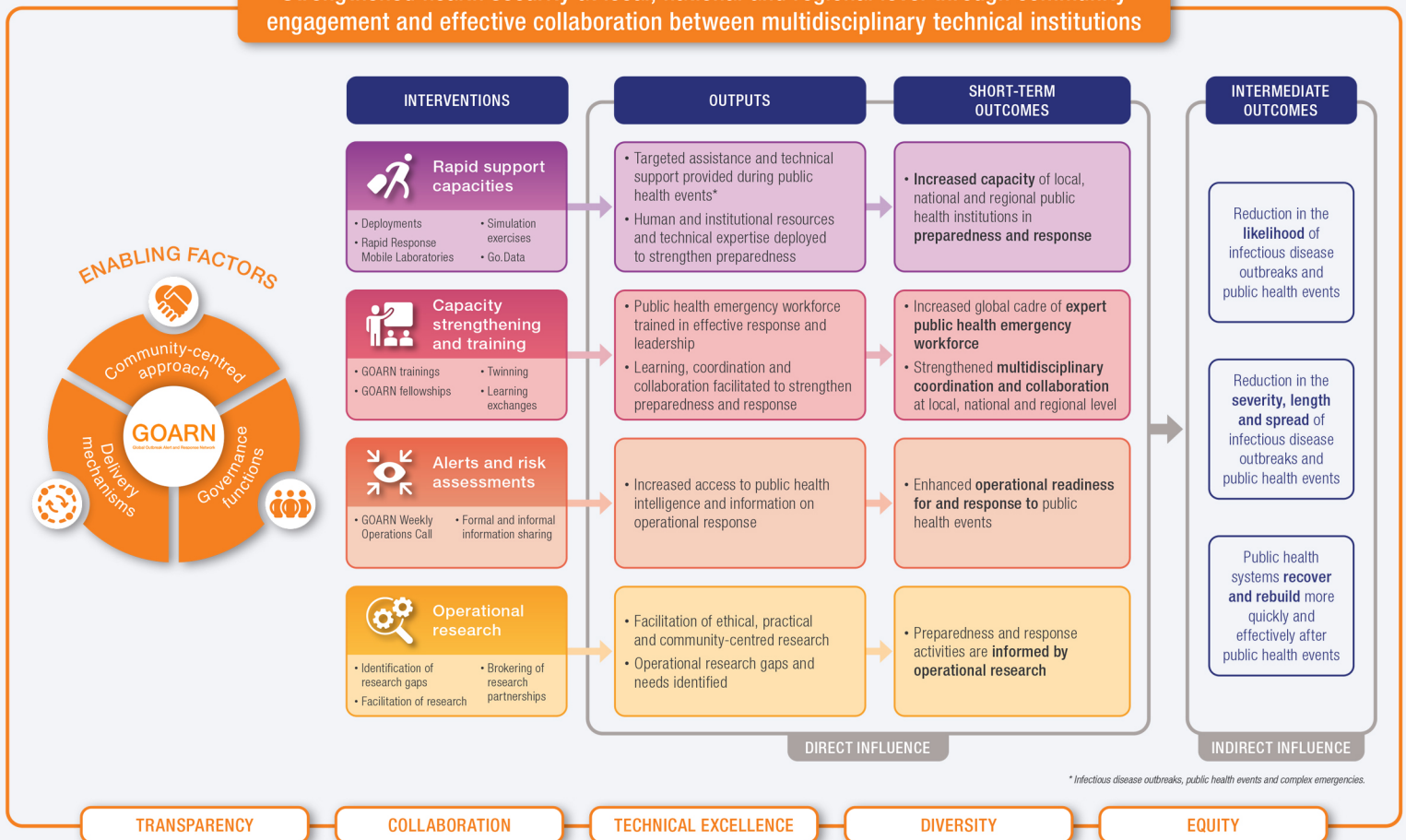
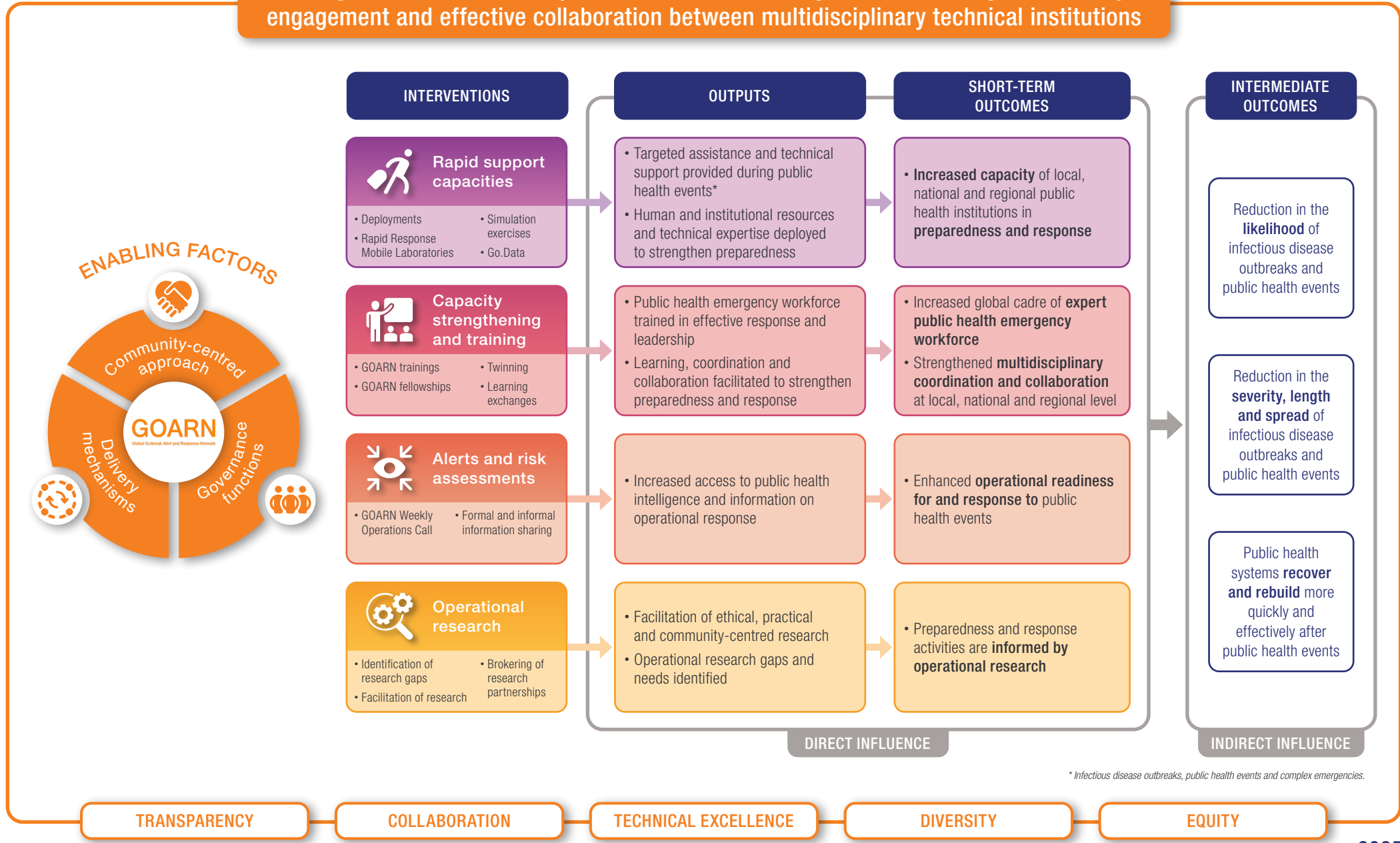


Theory of Change

Strengthened health security at local, national and regional level through community engagement and effective collaboration between multidisciplinary technical institutions



Strengthened health security at local, national and regional level through community engagement and effective collaboration between multidisciplinary technical institutions



* Infectious disease outbreaks, public health events and complex emergencies.

Key assumptions

- GOARN partners actively participate in and contribute to the network.
- GOARN partners continue to acknowledge and reflect the intersection between human, animal and environmental health in their work, recognising the critical importance of the One Health approach in strengthening preparedness for potential infectious disease outbreaks; and continue to collaborate closely and actively with animal and environmental health experts to share information, surveillance and best practice.
- WHO Regional and Country Offices and National Public Health Authorities are aware of the full scope of GOARN's remit and have confidence and trust in the network to support preparedness, response and recovery activities at local, national and regional level.
- There is political will and adequate resource at national and regional level to fund preparedness and resilience efforts in addition to response and recovery.
- Communities and local health systems are proactively engaged and participate actively in surveillance, detection and response efforts.
- Local and national health institutions remain willing to share early and emerging public health and operational intelligence with WHO and GOARN partners.
- There is ongoing collaboration and coordination between GOARN and other networks including EMT, Global Health Cluster, IANPHI and the Standby Partnership to maximise resources, avoid duplication and enhance coordinated preparedness and response activities.
- GOARN remains committed to supporting the development of the Global Health Emergency Corps (GHEC).
- GOARN is sufficiently resourced to fund and support coordination and activities across the network.

